



"Flourish to the end"

Hay Happenings

Email—hay-p.school@det.nsw.edu.au
Web Site www.hay-p.schools.nsw.gov.au

Hay Public School
Phone 02 6993 1270
Fax 02 6993 1779

Term 3, Week 7

2 September 2020



CREATIVE CATCHMENT - NAP NAP VISIT



SCHOOL RULES

*I can do my best.
I can respect all
people.
I can respect all
property.
I can be in the
right place.*

Protect yourself from viruses

- Clean your hands with soap and water, or hand sanitiser.
- Cover your nose and mouth when you cough or sneeze.
- Avoid close contact with anyone with cold or flu-like symptoms.
- Stay home if you are sick.

Find the facts
health.nsw.gov.au/coronavirus

Principal's Report

Mobile Phone Policy

Hay Public School does not allow students to bring mobile phones to school and students are asked not to bring phones to school. If exceptional circumstances exist that requires a student to carry a phone, the principal needs to be contacted and advised so that permission can be granted. Any phone that is brought to school needs to be taken to the front office in the morning before school and collected from the front office at the end of the day. The school is responsible for these devices during the day. These procedures have been made in consultation with the school community and is in line with the Department of Education's policy on digital devices.

COVID-19 Testing

The NSW Government now requires any student who is unwell with cold and flu-like symptoms to undergo COVID testing. Any student with symptoms such as fever, cough, runny nose, shortness of breath, headache, muscle or joint pains should present for testing. Students are unable to return to school until they provide a negative result to the school and until symptoms are clear.

School Uniform

As we transition into spring, the weather is very changeable. Students are asked to dress to the conditions and decide upon which uniform is more appropriate to wear. All students will be required to be dressed in their summer school uniforms by the commencement of Term 4.

Attendance

Education for your child is important and regular attendance at school is essential for your child to achieve their educational best and increase their career and life options. NSW public schools work in partnership with parents to encourage and support regular attendance of children and young people. When your child attends school every day, learning becomes easier and your child will build and maintain friendships with other children. ***If a student misses as little as 8 days in a school term, by the end of primary school they'll have missed over a year of school.***

Parent Survey

Feedback is very important to us and parents are asked to give their opinion on the teaching and learning at Hay Public School. Currently there is a parent survey open and this will remain so until the end of the term. Participating in the survey is entirely voluntary, however, your responses are very much appreciated.

To participate in this survey, please use the following link:
<http://nsw.tellthemfromme.com/hayps2020>

Have a great week!

Carol Oatway

Principal

SPORTS NEWS

Virtual Cricket Visit

Next Tuesday, our Stage 2 and 3 students will be participating in a virtual Cricket Stars visit. This is normally an annual event where the Country NSW male and female cricket stars come to our school and run a session with the students.

This year Cricket NSW have thought outside the box and are bringing the stars to our classrooms through a virtual visit. This is a wonderful way to keep a bit of normality in our school calendar and exciting for the students to interact with well-known players.

Cross Country/Fun Run

It has been pleasing to see many of our students running/walking the Bushy Bend track during the week. Please remember we will be hosting our Cross Country event on Thursday 24th September for students 8 years and older. The 8, 9 and 10 year olds complete a 2km loop, while the 11, 12 and 13 year olds complete a 3km loop.

Thank you to all the parents who have offered to help with the event, while we'd really love your help, unfortunately we are unable to have external visitors at school events this year.

CWA PUBLIC SPEAKING FINALISTS

Congratulations to the class winners of the CWA public speaking competition. The school finals will be held this Friday 4th September in the school hall.

Unfortunately, this year due to Covid 19 restrictions, only the children giving their speeches, the judges and one teacher will be able to attend the school finals.



Stage 2 class finalists



Stage 3 class finalists

K-2 SPORTSPEOPLE OF THE WEEK

Week 6 Sports Stars of the Week were

Kinder – Erin Fitzpatrick & Sophie Dowse

Year 1 – Tori Riddle & Lachlan Back

Year 2 – Edward Maloney & Ashton Eggleton



School Banking Day



Monday is School Banking Day.

Students should bring in their weekly deposit to the front office first thing in the morning.

Weekly Attendance Rates**Week Ending: 28 August 2020**

1	2Z	95.71%
2	3J	92.63%
3	4B	89.00%
4	1R	88.42%
5	5D	86.67%
6	4/5S	85.45%
7	KC	84.17%
8	6SC	82.22%
Week 6 Attendance		88.00%
2020 Attendance		91.92%

*Students who attend school 90% of the time are missing on average 1 day per fortnight, 5 days per term, 20 days per year and 260 days over the course of their education. This equates to missing a year and a half out of their overall education. Is your child missing too much school?

Attendance Facts

- Well done to 2Z for their excellent attendance last week;
- Well done to all classes who achieved over 90% attendance last week;
- Children are required to attend school every day unless sick;
- A medical certificate is required for illnesses over 3 days;
- Children who attend school regularly are prepared for success in school and in life;
- Children who attend school regularly are more engaged in their learning;
- Children who attend school regularly develop healthy life habits;
- Children who attend school regularly feel more connected to their community and develop important social skills and friendships; and
- Students who attend school regularly are set up for a strong future.

CREATIVE CATCHMENT**EVERY DAY COUNTS....****A day here or there doesn't seem like much, but...**

When your child misses just...	that equals...	which is...	and therefore, from Kindy to Year 12, that is...	This means that the best your child can achieve is...
1 day each fortnight	20 days per year	4 weeks per year	Nearly 1 ½ a years of school	Equal to finishing Year 11
1 day a week	40 days per year	8 weeks per year	Over 2 ½ years of school	Equal to finishing Year 10
2 days a week	80 days per year	16 weeks per year	Over 5 years of learning	Equal to finishing Year 7
3 days a week	120 days per year	24 weeks per year	Nearly 8 years of learning	Equal to finishing Year 4

*Give your child
every chance to
succeed...*

**Every day
counts!**

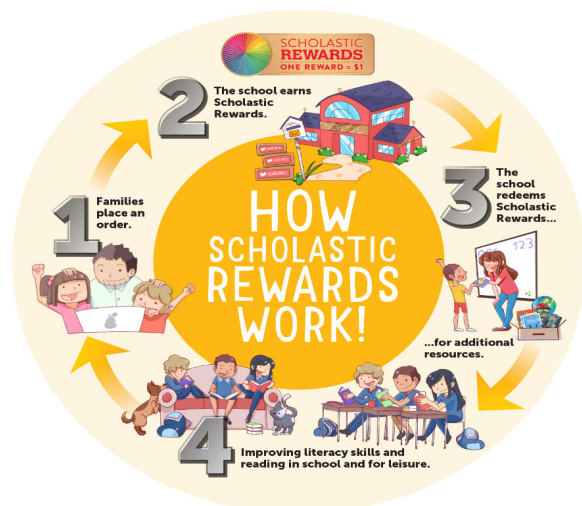


****CHANGE OF DATE******SCHOOL PHOTOS**

Will be taken on

Wednesday 23 September.**Term 3, Week 10**

Students will be issued with photo packs shortly.

FULL WINTER UNIFORM TO BE WORNSCHOLASTIC  **Book Club****Issue 6 - Orders Due
Friday 11 September****COVID-19 UPDATE**

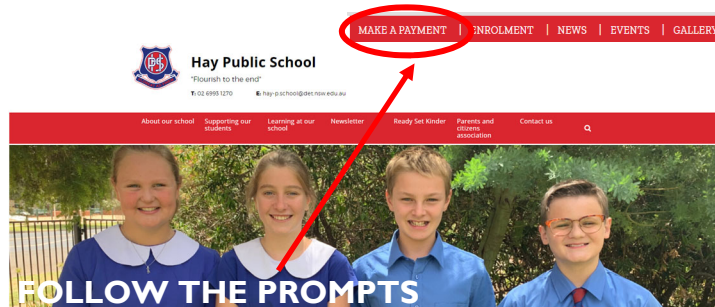
If a student has been absent due to flu like illness or develops flu like symptoms while at school, they are not to return to school until they have a negative COVID-19 test and are symptom free.

The negative COVID-19 test result must be sighted and received by the school for both students and staff members before their return to school.

Schools should encourage the immediate COVID-19 testing for any student or staff member identified as being unwell.

What's Happening**TERM 3 2020**

4 September	CWA Public Speaking School Finals
8-9 September	Robotics Workshops
10 September	P&C Meeting (TBC)
11 September	CWA Public Speaking District Finals
14 September	Principal's Reward Lunch
23 September	School Photo's
23 September	No Greenslip Reward
24 September	FUN RUN
25 September	Last day of Term 3



Hay Public School
"Flourish to the end!"
02 6955 1270 | hay-p.schools.nsw.edu.au

MAKE A PAYMENT | ENROLMENT | NEWS | EVENTS | GALLERY

Follow the prompts

PARENT ONLINE PAYMENT (POP)**FOR SCHOOL FEES, EXCURSIONS**

Did you know that you can make payments to your child's school online?

We have launched a new online payment portal linked to your school's website to make it easier for you to pay for school related payments. This is a secure payment page hosted by Westpac which enables parents to pay online by using either VISA, MasterCard or debit card..

What expenses can be paid online?

- Voluntary School Contributions
- Subject Contributions
- Excursions
- Sport
- Creative and Practical Arts
- Sales to Students
- Other (e.g canteen)

**When?**

This payment method is available now.

How?

Log onto School site at www.hay-p.schools.nsw.edu.au
Click on "Make a Payment" and follow the prompts to make a payment via Visa or MasterCard.